



RESEARCH ARTICLE

Bacteriological and Molecular Study of Some Urinary Tract Infections Bacteria in Human and Cows in Babylon Province

Dhay Ali Abed¹, Karrar Jasim Hamzah*², Abdul-kareem S Al-Yassari³ and Jalil Mehrzad⁴

^{1,3}Department of Veterinary Microbiology, College of Veterinary Medicine/Al-Qasim Green University Babylon 51013, Iraq; ²Department of Veterinary Internal and Prevention Medicine/ College of Veterinary Medicine/Al-Qasim Green University, Babylon 51013, Iraq; ⁴Department of Microbiology and Immunology, Faculty of Veterinary Medicine/University of Tehran, Tehran, Iran

*Corresponding author: karraraljanabi@vet.uoqasim.edu.iq

ARTICLE HISTORY (24-403)

Received: July 15, 2024
Revised: October 22, 2024
Accepted: October 30, 2024
Published online: December 4, 2024

Key words:

Biofilm formation
Antimicrobial resistance
animals
Gene expression
Genetics
Health
Klebsiella pneumoniae

ABSTRACT

Human and animal UTIs have increasingly become prevalent posing severe health risks to everyone infected. The purpose of this work was to identify bacterial UTIs in humans and cows, as well as to investigate antibiotic resistance of *Klebsiella pneumoniae* isolates concerning biofilm production. A total of 100 urine samples were collected: 50 from humans admitted to Al-Hashimiya and Al-Qasim General Hospital, Iraq, and 50 from cows in different areas of Babylon province in September- December 2021. Three genes were targeted: *wcaG*, *TRE-C*, and the housekeeping gene *rrsE*. Among 100 cases, 45 bacterial isolates were identified: *K. pneumoniae* (22 isolates, 48.88%), *Escherichia coli* (10 isolates, 22.22%), *Staphylococcus aureus* (7 isolates, 15.55%), and *Pseudomonas aeruginosa* (6 isolates, 13.33%) *Klebsiella pneumoniae* biofilm formation was determined using congo red agar and microtiter plate method, detecting that 2 exhibited strong biofilm forming ability, 8 moderate ability, 10 weak ability and 2 no biofilm forming ability. Relative expressions of *wcaG*, *treC*, and *rrsE* were validated by qPCR. AST indicated moderate susceptibility of the isolates to piperacillin-tazobactam (54.54%), cefepime (50%), cefotaxime (50%), cefoperazone-tazobactam (45.45%), ceftazidime (45.45%), and amoxicillin-clavulanic acid (40.4%). That is why in anamnestic data the sensitivity of other antibiotics such as amoxicillin, cefuroxime, cefoxitin, and ceftriaxone was below 40%. This increase has been associated with multidrug-resistant *K. pneumoniae*, through presented mutations stimulating biofilm formation – a factor difficult to treat.

To Cite This Article: Abed DA, Hamzah KJ, Al-Yassari AKS and Mehrzad J, 2024. Bacteriological and molecular study of some urinary tract infections bacteria in human and cows in Babylon province. Pak Vet J. <http://dx.doi.org/10.29261/pakvetj/2024.285>

INTRODUCTION

With various important functions, the urinary tract (UT) is one of the vital organs in the animals' body; It effectively removes toxic waste from the body, regulates body fluids, and influences hormone production. UT infection (UTI) is defined by colonization and infections by one or more UT parts (Mohammed *et al.*, 2020), of which causes are mainly gastrointestinal tract-based bacteria; these infections lead to bacterial colonization and invasion of the external genitalia, bladder and urethra, leading to painfully damaging urine formation and flow. UTI also harms vasocirculation of urinary bladder, leading to kidneys damage and thus electrometabolic imbalance (Yazdi *et al.*, 2020). Bacteria adhere and

persist, and multiply in the urinary tract led to UTIs (Mohammed *et al.*, 2020).

Friedlander was first isolated it, in 1882 from lungs of died pneumonial patients (Kozlova *et al.*, 2018), is ubiquitous in nature and environment, where they are found in surface water, soil, sewage, and on plant (Osińska *et al.*, 2016). Various virulence factors of *K. pneumoniae* enable them *K. pneumoniae* to invade the host; the *K. pneumoniae*'s virulence factors include capsular polysaccharide, lipopolysaccharide, siderophore production, serum resistance, fimbriae and production of urea and enterotoxin (Hanoon *et al.*, 2023; Pu *et al.*, 2024). As the predominant opportunistic uropathogens, *K. pneumoniae* causes infections everywhere (i.e., from UT, liver and lungs, bones osteomyelitis (Chung *et al.*, 2008;

Siu *et al.*, 2012), wound or post-surgery infection *E.coli*-related bacteraemia (Prokesch *et al.*, 2016; Virgilio *et al.*, 2016; Mahmood *et al.*, 2020). *K. pneumoniae* is also considered one of the six most a common nosocomial infectious pathogens, worldwide (Lee *et al.*, 2017). Although traditionally acquired of *K. pneumoniae* is through that is why researches on this important pathogen are interestingly being done (Yinnon *et al.*, 1996, Hamzah *et al.*, 2020).

"*Klebsiella pneumoniae*'s ability to form biofilms is well known. These biofilms, consist of clusters of bacteria embedded in an extracellular- matrix. This matrix is composed of proteins, polysaccharides, DNA, peptides, and fatty acids (Mirzaei and Ranjbar, 2022). Biofilm-producing microorganisms often exhibit- properties that are completely different from their free-floating (planktonic), counterparts of the same species, as demonstrated by various studies (Hutchins, 2018).

Further, *K. pneumoniae* the sixth causative nosocomial pathogens, worldwide (Lee *et al.*, 2017). Although *K. pneumoniae* is of nosocomial infection, nonetheless it is one of the most increased interested topics to uncover potential animal transmission pathways. It is still impossible for researchers to accurately identify harmful strains of *K. pneumoniae* (Davis *et al.*, 2015). Genetic investigations may be useful to interrelate drug resistance and clinical *K. pneumoniae* population strains of human and bovine isolates in order to discover pathogenicity, virulence factors, and biofilm formation; expression of certain genes pathogenicity genes may be beneficial. Infections with very seldom curable UTIs are increased by multidrug resistant *K. pneumonia* that is more pathogenicity (Mohammed and Mustafa, 2023). The. In this analysis, we evaluate the hypothesis that variations in *K. pneumoniae* virulence, nucleotide mutations, genetic characteristics associated with antibiotic resistance, and biofilm development could impact the way UTIs are treated (Sundaresan *et al.*, 2024).

MATERIALS AND METHODS

Collection of Urine Samples: For this study, a urine specimen of 10ml of was obtained from human and cows. The midstream human urine samples were collected using clean, screw- capped containers commercially available. These samples were obtained from patients attending Al-Hashimiya General Hospital, and AL-Qasim General Hospital, and were brought to the microbiological laboratory within 2 hours for bacterial analysis. For cow urine sample, massage method and repeated sterile catheterization were employed to obtain urine from cows in the Al-Qasim area. They collected transport samples from different passengers in sterile containers during the period from December 2021 to May 2022.

Antibiotic Sensitivity Testing: The ability of the isolates to respond to the antibacterial agents was established using the Kirby-Bauer disk diffusion technique as described by Watts, Mc Dougall and Carson (2008). The procedure included several steps:

1-Preparation of Bacterial Inoculum: A new culture of the bacteria was prepared by inoculating fresh selective

media and incubating the cultures overnight. These cultures were standardized to 0.5 McFarland to add a similar amount of bacteria for the experiment.

2- Inoculation of Agar Plates: Mueller Hinton agar plates were prepared and from the standardized bacterial suspension a loopful was evenly spread over the Mueller hinton agar using a sterile cotton swab. The data generated placed the bacteria through different phases of growth, which was important for standardizing what was on every plate as a bacterial colony.

3- Placement of Antibiotic Disks: The antibiotic disks were equally spread on the surface of the agar by using sterile forceps and the disks should not touch each other but at least there should be a distance between two disks as the diameter of the disc.

4- Incubation: The plates were then incubated at about 35-37°C for about 18-24 hours in other to have bacterial growth as well as bonding on the antibiotics.

5- Measurement of Zones of Inhibition: After the incubation period, the diameter of the inhibitory zones (the diameter of bacterial growth inhibition) was determined with a ruler or caliper, as described below.

6- Interpretation of Results: Antibiotics employed: The diameters of the inhibition zones were compared to standard provided by the manufacturer to give the bacteria strains tested the following classification; Sensitive, Intermediate or Resistant.

PCR for *Klebsiella pneumoniae*: The obtained colonies were identified with *Klebsiella pneumoniae*, using primers that are characteristic for this microbe. The forward primer (KP-27F3: KP-27F2 forward primer: 5'-GGATATCTGACCAGTCGG-3' and; KP-27R3 reverse primer 5'-GGGTTTTGCGTAATGATCTG-3' followed by detecting a fragment of 176 bp specific to virus using GenBank accession number CP028478.1 as reported in Dong *et al.* (2015).

For biofilm-related gene expression analysis, primers targeting *treC* were used: 4,5 were amplified with forward *treC*-F and reverse *treC*-R; *treC*-F (5'-GGGGCGTAAA TGGTAGC-3') *treC*-R (5'-GGACTTAACTTCTGGG TGGT-3') that amplified a fragment of 343 bp.

PCR Protocols: Normally in this performed PCR reaction the first stand was dried at 94°C for 5 minutes while 35 cycles were set for 94°C for 30sec, then the annealing was at 56°C for 30 sec and the extension at 72°C for 1 minute. Another extension step was performed at 472°C for 5 min. The cycling conditions were as follow. Semiquantitative PCR was performed on the Applied Biosystems® 7500 Fast System and for recombination PCR GoTaq® 1-Step RT-qPCR system, reverse transcription was done at 42°C for 15 minutes and the sample was denatured at 95°C for 10 minutes, PCR condition was 40 cycles of denaturation at 95°C for 10 seconds, annealing at 60°C

The Biofilm Formation Assessment by using Congo Red Agar Method Congo Red Agar (CRA) was utilized to test biofilm formation. The medium was prepared with the following components:

- Sucrose: 50 g/L, Brain Heart Infusion (BHI) Broth: 37 g/L, Congo Red Indicator: 8%
- And Agar: 20 g/L. The medium was then subjected to autoclavation at 15 minutes at a temperature of 121 °C and then allowed to cool to the room temperature before being aliquoted in to sterile petri dishes. These plates were inoculated with bacterial samples and were grown at 37°C for 24 – 48 hrs. Colony morphology was used to assess biofilm production:
- Strong biofilm producers: Black, dry and hard colonies, in appearance.
- Moderate biofilm producers: It concluded that there are dark colonies without crystallinity.
- Weak or non-biofilm producers: Smooth pinkish colonies.

Biofilm Assay using microtiter plate method: A standard biofilm formation assay was performed employing microtiter plate technique was adopted as described by Aniba *et al.* (2024). Overnight cultures of new bacterial colonies were grown in Luria-Bertani broth plus 0.5% d-glucose at 37°C. The bacterial suspension density was standardized to 10⁸ colony forming units /ml (approximately 0.5 McFarland standard) and 200µl of this suspension was then aliquoted into each well of a 96 well flat bottom polystyrene plate. The plates were allowed to form biofilm at 37°C for 24h and biofilm formation was measure in terms of adherence to the polymethylglycine well surface.

RESULTS

Molecular Identification of *Klebsiella pneumoniae* by PCR Techniques // Regular PCR Protocol. The molecular identification of isolates utilized the specific capsule polysaccharide gene of *K pneumoniae*; *rcaA* regulates capsule polysaccharide synthesis. Positive controls used in the study were reference strains. First, all the isolates were biochemically characterized and identified as *Klebsiella* spp Biochemical reactions of all positive *Klebsiella* spp isolates from human and cows; 22 out of 30 from human and cows were found positive for characteristic bands for reference strain of *K. pneumoniae* as observed in the gel electrophoresis images of PCR products with no band as observed in negative controls (Fig. 1). These results pointed to a high level of concordance between the biochemical and molecular method of identification of *K. pneumoniae*.

For amplification of *rcaA* gene, the primer pair used for amplification were *rcaA-F* and *rcaA-R*, and therefore these isolates were categorized under K2 serotype of *K. pneumoniae*. Finally, all the 22 samples produced PCR products of 176bp which suggest that they are all positive for *rcaA* gene, as seen in Fig. 1. The *rcaA* gene determines the mucoid phenotype through the colanic acid synthesis; low temperatures (30°C) are not necessary to trigger colanic synthesis.

There were also HvKP strains which exhibited hypermucoviscosity feature due to the mucoid colony phenotype. A major factor arising from this study is the high rate of polysaccharide production in these strains which is useful in explaining UTI infections. Biofilm Formation, the hallmark of biofilm-producing *K.*

pneumoniae isolates is the formation of colonies with distinctive morphological characteristics: BV biofilm-forming bacteria and RV non-biofilm-forming bacteria were first noted by their morphological and color differences; black colonies are biofilm producers and red colonies are non-biofilm producers (Kaiser *et al.*, 2013) (Fig. 2). The Congo Red test outcomes represented in Fig. 2 depicted differences in the adhesion of polysaccharide in distinct groups of bacteria; a large number of XDR strains being robust producers of exopolysaccharides.

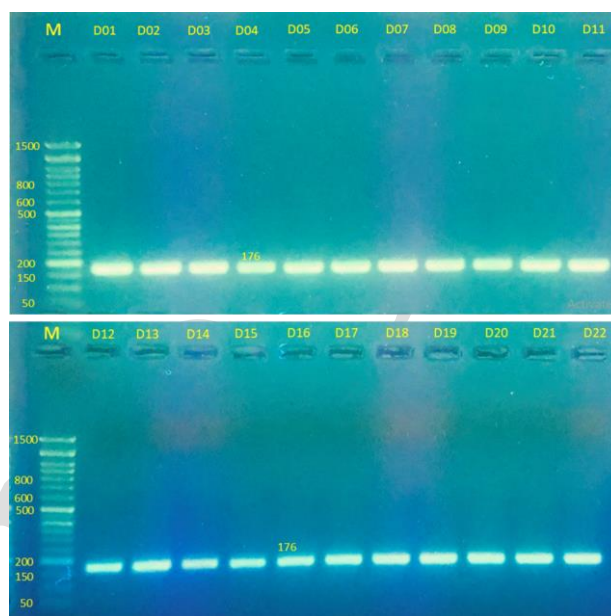


Fig. 1: Polymerase chain reaction (PCR) on areas of interest 1-22 amplified a fragment of the *Klebsiella pneumoniae* partial *rcaA* gene of 176bp. It was prepared as 1.5% agarose gel with 3 µL RedSafe (Intron, Korea) staining solution. The gel was subjected to electrophoresis at a voltage of 90 V for 45 min employing a DNA Ladder as the molecular weight control.



Fig. 2: Biofilm-forming ability of *Klebsiella pneumoniae* isolates to test this ability, biofilm-forming isolates have been streaked onto Congo red agar plates and incubated for 24 h at 37°C and 5% CO₂.

Based on these results, the ability of bacteria to form biofilm was tested by Microtiter Plate Method (MTP) As shown in Table 2, we observed biofilm production abilities categorized as follows:

- Strong producers (>0.400): 2 isolates
- Moderate producers (0.2-0.4): 8 isolates
- Weak producers (<0.2 to ≥0.12): 10 isolates
- Little producers (<0.11): 2 isolates

Table 1: Antibiotic sensitivity test of *Klebsiella pneumoniae*: Antibiotic sensitivity test profile of *Klebsiella pneumoniae* isolated from urinary tract infections (UTIs) in human and cow. Potency (mg/disc) for example in 25/10mg means concentration of antibiotics and its adjuvants.

Antibiotic Agent	Symbol	Potency (mg/disc)	Number of Sensitive Isolates (n=22)	Sensitivity Rate (%)
Amoxicillin	AMX	25	4	18.18
Amoxicillin-Clavulanic Acid	AMC	25/10	9	40.40
Piperacillin-Tazobactam	TZP	75/10	12	54.54
Cefoperazone-Tazobactam	C/T	4/500	10	45.45
Cefuroxime	CXM	500	8	36.36
Cefotaxime	CTX	500	11	50.00
Cefoxitin	CFx	10	6	27.27
Ceftazidime	CAZ	30	10	45.45
Ceftriaxone	CRO	30	2	9.09
Cefepime	CEF	30	11	50.00

Table 2 contains a sequence of primers list for PCR and thermocycling conditions used in this study

Table 2: Biofilm formation of *Klebsiella* isolates by using Microtiter plate method.

Property	Biofilm producer 20 (90.9%)			
	Non-biofilm producer (<0.12)	Weak producer (<0.2 ≥0.12)	Moderate producer (0.2-0.4)	Strong producer (>0.400)
Number of strains	2 (9.09%)	10 (50%)	8 (40%)	2 (10%)

Real-time PCR analysis on the *wcaG*, *treC*, and *rrsE* related to biofilm forming ability of *K. pneumoniae*. To compare the gene expression profiles responsive to biofilm formation of *K. pneumoniae* from the UT Isolates in both human and cows, we tested the *wcaG* and *treC* genes and the housekeeping gene *rrsE* (Fig. 4). The CT values of these genes examined in the microtiter plate assay were relatively close to the values obtained in our study (Table 3 and Fig. 3) and could be classified into heavily biofilm-forming, moderately biofilm-forming and weakly biofilm-forming isolates.

Table 3. Threshold Cycle values (CT, which is directly related to the fold change of the studied genes) of the genes (calculated automatically by the Mx3005P Stratagene system).

Sample	Gene	CT	Gene	CT	Gene	CT
KA1	<i>wcaG</i>	27.33	<i>treC</i>	22.56	<i>rrsE</i>	18.28
KA1	<i>wcaG</i>	27.55	<i>treC</i>	22.24	<i>rrsE</i>	17.69
KH1	<i>wcaG</i>	No Ct	<i>treC</i>	No Ct	<i>rrsE</i>	No Ct
KH1	<i>wcaG</i>	27.13	<i>treC</i>	No Ct	<i>rrsE</i>	No Ct
KA10	<i>wcaG</i>	23.69	<i>treC</i>	20.58	<i>rrsE</i>	17.44
KA10	<i>wcaG</i>	23.35	<i>treC</i>	20.77	<i>rrsE</i>	17.25
KH7	<i>wcaG</i>	27.09	<i>treC</i>	21.9	<i>rrsE</i>	17.6
KH7	<i>wcaG</i>	26.66	<i>treC</i>	21.62	<i>rrsE</i>	17
KA15	<i>wcaG</i>	20.74	<i>treC</i>	22.14	<i>rrsE</i>	19.86
KA15	<i>wcaG</i>	21.58	<i>treC</i>	22.21	<i>rrsE</i>	19.61
KH2	<i>wcaG</i>	27.16	<i>treC</i>	22.07	<i>rrsE</i>	18.87
KH2	<i>wcaG</i>	27.18	<i>treC</i>	22.03	<i>rrsE</i>	18.82
KA4	<i>wcaG</i>	20.68	<i>treC</i>	24.96	<i>rrsE</i>	21.01
KA4	<i>wcaG</i>	20.45	<i>treC</i>	24.04	<i>rrsE</i>	21.21

Antibiotic Susceptibility: The antibiotic susceptibility test indicated that the tested antibiotics have different inhibition zones around the photometric scale. The sizes of the inhibition zones were further classified according to CLSI standards as either sensitive, intermediate, or resistant as demonstrated from Table 1 below. This data indicates that there is need to regularly assess antibiotic resistance profiles of *K. pneumoniae* isolates.

Hypermucoviscous Strains: Explain about what it means to identify HvKP strains and its position in UTI infections and antibiotic resistance. Current Findings: Summarize your facts and reports in relation to the current literatures, with specific focus on the aspect of biofilm formation and virulence in *K. pneumoniae*.

DISCUSSION

Molecular methods are fast and sensitive methods for identifying organisms from clinical specimens. By the

product involved in the formation of the K antigen capsule, *Klebsiella pneumoniae*'s key gene is *rcsA* (Dong *et al.*, 2015; Hamzah & Hasso, 2019; Mosa *et al.*, 2022). Of all the *Klebsiella* strains, only *K. pneumoniae* is mostly pathogenic in nature. In addition, researchers have categorized them based on different characteristics as follows. Because *rcsA* is important for clinical application, this gene was chosen for molecular detection in this study (Dong *et al.*, 2015).

The results are consistent with other studies showing that *K. pneumoniae* is a highly biofilmogenic species. Our results showed that 20 out of 22 isolates (90.9 %) were biofilm producers as it was also found by Hassan *et al.* (2011) and Cepas *et al.* (2019). Other works indicate that biofilm formation in *K. pneumoniae* may be as high as 93.6% (Seifi *et al.*, 2016), and only 30% of which were characterized as high producers. Biofilm development potential varies with temperature, pH, and the surface on which it is forming (Biofilm Formation review by Cherif-Antar *et al.*, 2016).

All the *Klebsiella* isolates sampled 22 samples were analyzed for biofilm formation utilizing microtiter plate mimicking the studies carried by Makhrmash *et al.* (2022) as well as Kot *et al.* (2023). It is worth to notice that overproduction of biofilm is well correlated with antibiotic resistance in *K. pneumoniae* (Vuotto *et al.*, 2017). Among 137 isolates, 85% of biofilm producers were defined as ESBL producers (Yang & Zhang, 2008). This is in contrast to Subramanian *et al.* (2012) wherein the authors identified that samples were 73.3% resistant to cefotaxime and 83.3% against ampicillin. This should suggest that the degree of antibiotic resistance and biofilm formation in *K. pneumoniae* deserves further study.

Many researches demonstrated that genes of *K. pneumoniae* biofilm are linked with pneumonia and urinary tract infections (Jagnow & Clegg, 2003; Balestrino *et al.*, 2008; Rosen *et al.*, 2008). In this present study we selected two genes to check their effect on biofilm forming ability and presence of MDR genes. The *wcaG* genotype is associated with some capsular serotypes of *Cryptococcus neoformans* and *Cryptococcus gattii* (K1, K5, K58, K16). The *wcaG* gene encodes production of a polysaccharide capsule which grants a higher virulence to *K. pneumoniae* (Wu *et al.*, 2008). When *treC* gene is not functional, then glucuronic acid

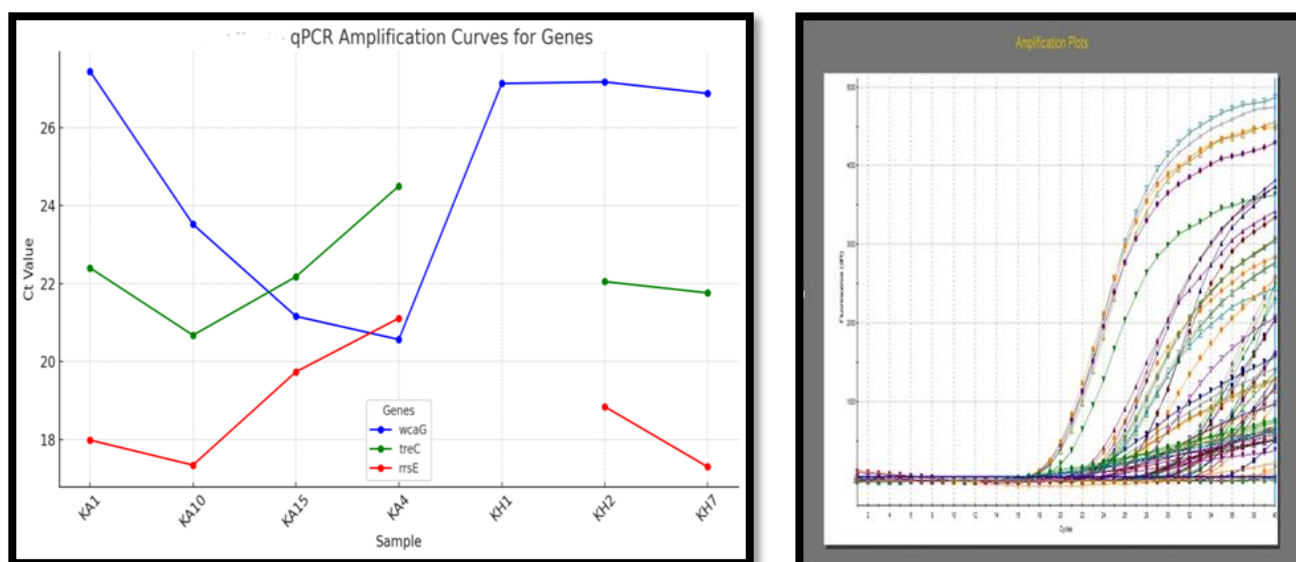


Fig. 3: Example of amplification plot of three genes, *wcaG*, *treC* and *rrsE*. and qPCR Amplification curve for genes.

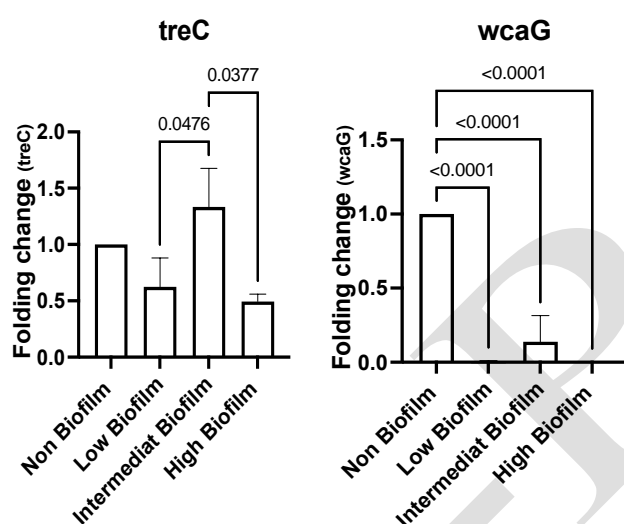


Fig. 4: Statistics of folding change of *treC* and *wcaG* genes using GRAPH PAD PRISM 9 software. calculated by $2^{-\Delta\Delta CT}$ method to identify genes that are differentially expressed relative to a fold change threshold. *wcaG* genes using GRAPH PAD PRISM 9 software. calculated by $2^{-\Delta\Delta CT}$ method to identify genes that are differentially expressed relative to a fold change threshold.

which is required for biofilm formation in serotype K1 is not produced (Zamze *et al.*, 2002; Wu *et al.*, 2011). Our results pointed out that there is a strong relationship between isolated virulence genes and biofilm formation and antibiotic resistance as demonstrated by Ho *et al.* (2011). The given work also showed that variations in *wcaG* might affect the structure of the polysaccharide capsule, promote biofilm formation. We identified that, eighty percent of *K. pneumoniae* isolates were positive for biofilm formation have been described previously, that virulent strains are supposed to get more sessile in biofilm matrix (Zheng *et al.*, 2018; Shadkam *et al.*, 2021).

The influence of gene expression on biofilm formation approves that biofilm formation is indeed linked to the presence of antimicrobial resistance genes. Biofilm-forming capability was significantly enhanced in the isolates containing *wcaG* and *treC* resistance genes supporting earlier findings in the context of multidrug

resistant Enterobacteriaceae (Corehtash *et al.*, 2015; Atiyah, *et al.*, 2019). These resistance genes increase in conjunction with the observed level of biofilm formation, indicating that plasmid associated resistance genes may be involved in biofilm formation (Maeyama *et al.*, 2004; Al-Bayati & Samarasinghe, 2022).

Thus, potential prevention and treatment targets of biofilm formation in *K. pneumoniae* and their participation in overcoming antimicrobial therapy effects remain further investigated (Ashwath *et al.*, 2022). It also expresses considerable genes including *treC*, *wabG* and *wcaG* to endeavor infections by attachment to epithelial and endothelial layers of the urinary and respiratory tracts (Stahlhut *et al.*, 2012; El Fertat-Aissani *et al.*, 2013).

Conclusions: The relatively high level of antibiotic resistance and increased virulence profile observed in *Klebsiella pneumoniae* UTI isolates in the study area from this investigation appear to be associated with the commensurate expression of biofilm formation genes including *wcaG*, *treC*, and *rrsE*. These discoveries present a rather unfavorable picture for managing UTI due to *K. pneumoniae* and, thereby, the need to develop standard antibiotic treatments in humans as well as animals. Nevertheless, more investigations are needed to understand more about the interaction between biofilm formation and antibiotic resistance in the context of *K. pneumoniae* related UTI and their outcomes.

Acknowledgments: We thank the technicians in the laboratory of Vet-Med College—Al-Qasim Green University for their technical support.

Author Contributions: Dhay: Research concept and design; Abdul-Kareem assembly data; Karrar data analysis, interpretation, writing the article and final approval of the article and Mehrzad critical revision.

REFERENCES

Al-bayati M and Samarasinghe S, 2022. Biofilm and gene expression characteristics of the carbapenem-resistant enterobacteriales,

- Escherichia coli* IMP, and *Klebsiella pneumoniae* NDM-1 associated with common bacterial infections. *Int J Environ Res Public Health* 19: 4788.
- Aniba R, Dihmane A, Raqraq H, et al., 2024. Characterization of biofilm formation in uropathogenic *Staphylococcus aureus* and their association with antibiotic resistance. *The Microbe* 2: 100029.
- Ashwath P, Deekshit VK, Rohit A, et al., 2022. Biofilm Formation and Associated Gene Expression in Multidrug-Resistant *Klebsiella pneumoniae* Isolated from Clinical Specimens. *Curr Microbiol* 79: 1-10.
- Atiyah S A A, Degaimand Z D, Al-yassari A K S, et al., 2019. The frequency of *ebps* and *v8* genes in *staphylococcus aureus* isolates from different sources in Thiqr province-Iraq. *Plant Arch* 19: 1868-1871.
- Balestrino D, Ghigo J M, Charbonnel N, et al., 2008. The characterization of functions involved in the establishment and maturation of *Klebsiella pneumoniae* in vitro biofilm reveals dual roles for surface exopolysaccharides. *Environ Microbiol* 10: 685-701.
- Cepas V, López Y, Muñoz E, et al., 2019. Relationship between biofilm formation and antimicrobial resistance in gram-negative bacteria. *Microb. Drug Resist* 25: 72-79.
- Cherif-antar A, Moussa-Boudjemâ B, Didouh N, et al., 2016. Diversity and biofilm-forming capability of bacteria recovered from stainless steel pipes of a milk-processing dairy plant. *Dairy sci technol* 96: 27-38.
- Chung DR, Lee HR, Lee SS, et al., 2008. Evidence for clonal dissemination of the serotype K1 *Klebsiella pneumoniae* strain causing invasive liver abscesses in Korea. *J Clin Microbiol* 46: 4061-4063.
- Corehtash Z G, Khorshidi A, Firoozeh F, et al., 2015. Biofilm formation and virulence factors among *Pseudomonas aeruginosa* isolated from burn patients. *Jundishapur J Microbiol* 8(10): e22345.
- Davis G S, Waits K, Nordstrom L, et al., 2015. Intermingled *Klebsiella pneumoniae* populations between retail meats and human urinary tract infections. *Clin Infect Dis* 61: 892-899.
- Dong D, Liu W, Li H, et al., 2015. Survey and rapid detection of *Klebsiella pneumoniae* in clinical samples targeting the *rcsA* gene in Beijing, China. *Front Microbiol* 6: 519.
- El fertas-aissani R, Messai Y, Alouache S, et al., 2013. Virulence profiles and antibiotic susceptibility patterns of *Klebsiella pneumoniae* strains isolated from different clinical specimens. *Pathol Biol* 61: 209-216.
- Hamzah K J, Alhteah E D, Ibraheem A K, et al., 2020. Pathological changes induced by *klebsiella pneumoniae* in immunized rats with whole sonicated *klebsiella pneumoniae* antigens mixed with certain adjuvants. *Biochem Cell Arch* 20: 4701-4709.
- Hamzah K J and Hasso S A, 2019. Molecular prevalence of *Anaplasma phagocytophilum* in sheep from Iraq. *Open Vet J* 9: 238-245-238-245.
- Hanoon E K, Alammam M, Sobhanimonfared F, et al., 2023. Molecular detection of some virulence factors of hypervirulent *Klebsiella pneumoniae* that associated with pathogenicity. *Al-Kufa Univ for Biology* 15(2): 73-80.
- Hassan A, Usman J, Kaleem F, et al., 2011. Evaluation of different detection methods of biofilm formation in the clinical isolates. *Braz J Infect Dis* 15: 305-311.
- Ho J Y, Lin T L, Li C Y, Lee, et al., 2011. Functions of some capsular polysaccharide biosynthetic genes in *Klebsiella pneumoniae* NTUH K-2044. *PLoS One* 6: e21664.
- Hutchins C F, 2018. Investigating engineering and human behavioural factors influencing the colonisation of hospital taps with *Pseudomonas aeruginosa*. University of Southampton, Doctoral Thesis: 260.
- Jagnow J and Clegg S, 2003. *Klebsiella pneumoniae* MrkD-mediated biofilm formation on extracellular matrix-and collagen-coated surfaces. *Microbiol* 149: 2397-2405.
- Kaiser T D L, Pereira E M, Dos Santos K R N, et al., 2013. Modification of the Congo red agar method to detect biofilm production by *Staphylococcus epidermidis*. *Diagn Microbiol Infect Dis* 75: 235-239.
- Kot B, Piechota M, Szweda P, et al., 2023. Virulence analysis and antibiotic resistance of *Klebsiella pneumoniae* isolates from hospitalised patients in Poland. *Sci Rep* 13: 4448.
- Kozlova N, Barantsevich N, Barantsevich E, et al., 2018. Susceptibility to antibiotics in *Klebsiella pneumoniae* strains isolated in a multidisciplinary medical centre. *Russ J Infect Immun* 8: 79-84.
- Lee C R, Lee J H, Park K S, et al., 2017. Antimicrobial resistance of hypervirulent *Klebsiella pneumoniae*: epidemiology, hypervirulence-associated determinants, and resistance mechanisms. *Front cell infect microbiol* 7: 483.
- Maeyama R, Mizunoe Y, Anderson J M, et al., 2004. Confocal imaging of biofilm formation process using fluoroprobed *Escherichia coli* and fluoro-stained exopolysaccharide. *J Biomed. Mater. Res. A: An Official Journal of The Society for Biomaterials, The Japanese Society for Biomaterials, and The Australian Society for Biomaterials and the Korean Society for Biomaterials* 70: 274-282.
- Mahmood A K, Hamzah K J, Dirwal A R, et al., 2020. Isolation of *Escherichia coli* from skin wounds in cow. *Plant Arch* 20(1): 3108-3110.
- Makhrmash J, Al-aidy S, Qaddoori B, et al., 2022. Investigation of biofilm virulence genes prevalence in *Klebsiella pneumoniae* isolated from the urinary tract infections. *Arch Razi Inst* 77: 1421-1427.
- Mirzaei R and anjbar R. 2022. Hijacking host components for bacterial biofilm formation: an advanced mechanism. *Int Immunopharmacol* 103: 108471.
- Mohammed Y, Mustafa J, Abdullah A, et al., 2020. Isolation and molecular study of some bacterial urinary tract infections of sheep in Basrah province. *Iraqi J Agric Sci* 51: 885-893.
- Mohammed W, Awad F A, Mustafa T I, et al., 2023. The Importance of *Klebsiella pneumoniae* as a Pathogen and the Increasing Prevalence of Antibiotic-Resistant Strains and Molecular Characteristics. *Baghdad J Biochem Appl Biol Sci* 4(4): 180-203.
- Mosa A H, Hamzah K J, Aljabory H A, et al., 2022. First study on the molecular prevalence of caprine arthritis encephalitis virus in goats in Babylon, Iraq. *Vet World* 15: 1129.
- Osińska A, Harnisz M, Korzeniewska E, et al., 2016. Prevalence of plasmid-mediated multidrug resistance determinants in fluoroquinolone-resistant bacteria isolated from sewage and surface water. *Environ Sci Pollut Res Int* 23: 10818-10831.
- Pu Q, Lin P, Zhou C et al., 2024. Know your enemy: *Klebsiella pneumoniae*. In *Molecular Medical Microbiology*, 3rd Ed, Academic Press, San Diego, USA :1491-1501.
- Prokesch B C, Tekippe M, Kim J, et al., 2016. Primary osteomyelitis caused by hypervirulent *Klebsiella pneumoniae*. *Lancet Infect Dis* 16: e190-e195.
- Rosen D A, Pinkner J S, Walker J N, et al., 2008. Molecular variations in *Klebsiella pneumoniae* and *Escherichia coli* FimH affect function and pathogenesis in the urinary tract. *Infect Immun* 76: 3346-3356.
- Seifi K, Kazemian H, Heidari H, et al., 2016. Evaluation of biofilm formation among *Klebsiella pneumoniae* isolates and molecular characterization by ERIC-PCR. *Jundishapur J Microbiol* 9(1): e30682.
- Shadkam S, Goli H R, Mirzaei B, et al., 2021. Correlation between antimicrobial resistance and biofilm formation capability among *Klebsiella pneumoniae* strains isolated from hospitalized patients in Iran. *Ann clin microbiol antimicrob* 20: 1-7.
- Siu L K, Yeh K M, Lin J C, et al., 2012. *Klebsiella pneumoniae* liver abscess: a new invasive syndrome. *Lancet Infect Dis* 12: 881-887.
- Stahlhut S G, Struve C, Krogfelt K A, et al., 2012. Biofilm formation of *Klebsiella pneumoniae* on urethral catheters requires either type 1 or type 3 fimbriae. *Fems Immunol Med MIC* 65: 350-359.
- Subramanian P, Shanmugam N, Sivaraman U, et al., 2012. Antibiotic resistance pattern of biofilm-forming uropathogens isolated from catheterised patients in Pondicherry, India. *Australas Med J* 5: 344.
- Sundaresan A K, Gangwar J, Murugavel A, et al., 2024. Complete genome sequence, phenotypic correlation and pangenome analysis of uropathogenic *Klebsiella* spp. *AMB Express* 14(1): 78.
- Virgilio E, Castaldo P, Catta F, et al., 2016. Abdominal surgical site infection due to *Klebsiella pneumoniae* carbapenemase-producing *K. pneumoniae*. *Int Wound J* 13: 1075.
- Vuotto C, Longo F, Pascolini C, et al., 2017. Biofilm formation and antibiotic resistance in *Klebsiella pneumoniae* urinary strains. *J Appl Microbiol* 123: 1003-1018.
- Wu J H, Wu A M, Tsai C G, et al., 2008. Contribution of fucose-containing capsules in *Klebsiella pneumoniae* to bacterial virulence in mice. *Exp Biol Med* 233: 64-70.
- Wu M C, Lin T L, Hsieh P F, et al., 2011. Isolation of genes involved in biofilm formation of a *Klebsiella pneumoniae* strain causing pyogenic liver abscess. *PLoS One* 6: e23500.
- Yang D and Zhang Z. 2008. Biofilm-forming *Klebsiella pneumoniae* strains have greater likelihood of producing extended-spectrum β -lactamases. *J Hosp Infect* 68: 369-371.
- Yazdi M, Bouzari M, Ghaemi E A, et al., 2020. Isolation, characterization and genomic analysis of a novel bacteriophage VB_EcoS-Golestan infecting multidrug-resistant *Escherichia coli* isolated from urinary tract infection. *Sci Rep* 10: 1-13.
- Yinnon A, Butnaru A, Raveh D, et al., 1996. *Klebsiella* bacteraemia: community versus nosocomial infection. *QJM: Int J Med* 89: 933-942.
- Zamze S, Martinez-pomares L, Jones H, et al., 2002. Recognition of bacterial capsular polysaccharides and lipopolysaccharides by the macrophage mannose receptor. *J Biol Chem* 277: 41613-41623.
- Zheng J X, Lin Z W, Chen C, et al., 2018. Biofilm formation in *Klebsiella pneumoniae* bacteremia strains was found to be associated with CC23 and the presence of *wagG*. *Front cell infect microbiol* 8: 21.