



## RESEARCH ARTICLE

### Epidemiology and Antimicrobial Susceptibility of Methicillin-Resistant *Staphylococcus aureus* in Cattle of Pothohar Region, Pakistan

Asghar Khan<sup>1</sup>, Aneela Zameer Durrani<sup>1</sup>, Arfan Yousaf<sup>2</sup>, Jawaria Ali Khan<sup>1</sup>, Mamoon Chaudhry<sup>1</sup>, Zahida Fatima<sup>3</sup> and Amjad Khan<sup>4</sup>

<sup>1</sup>University of Veterinary and Animal Sciences, Lahore Pakistan; <sup>2</sup>Pir Mehr Ali Shah ARID Agricultural University, Rawalpindi, Pakistan; <sup>3</sup>Animal Division, Pakistan Agriculture and Research Council, Islamabad; <sup>4</sup>Pakistan Kidney and Liver Institute and Research Centre, Lahore Pakistan

\*Corresponding author: drasghar07@gmail.com; drasghar07@uair.edu.pk

#### ARTICLE HISTORY (18-469)

Received: December 12, 2018  
Revised: March 08, 2019  
Accepted: March 11, 2019  
Published online: April 06, 2019

#### Key words:

Cattle  
MRSA  
Pakistan  
Pothohar Region  
Sensitivity  
Sub-Clinical Mastitis

#### ABSTRACT

Sub-clinical mastitis has remained the leading cause for decline in production of dairy animals as a silent epidemic all the times in Pakistan. A questionnaire-based cross-sectional study was conducted to assess the prevalence and potential risk factors for sub-clinical mastitis in the Pothohar region of Pakistan in 2018. Total of 104 cattle milk samples were collected from commercial and subsistent dairy farms. CMT positive samples were cultured and biochemical tests were conducted before confirmed on PCR for *mecA* gene *Methicillin Resistant Staphylococcus aureus* (MRSA) bacteria. *In-vitro* antibiotic susceptibility was also assessed. An overall prevalence of 71.1% was found; where cross-bred was found more susceptible (80.7%) as compared to other breeds. *MecA* gene-MRSA prevalence based on PCR was 54%. On regression analysis the potential risk factors identified here included; daily milk yield, parity, udder shape, teat morphology, shed type, quarantine of new animals and deworming of animals (OR>1; P-value<0.05). In MRSA confirmed isolates, Penicillin group was found highly resistant (92.5%) amongst all the groups. While amongst individual antibiotics Amoxicillin was found highly (100%) resistant followed by Cefixime and Spectinomycin. Whereas based on sensitivity Quinolone (Moxifloxacin 95%) group was the most sensitive (91.7%) followed by Sulphonamides (Sulphaphenazole 87.5%) and Amino-glycoside (Gentamycin 90%). An emerging pattern of *mecA* gene MRSA was recorded here with alarming sub-clinical mastitis prevalence in the study area. Immediate preventive measures need to be taken to address the problem. The findings of the current study will assess in control and prevention of subclinical mastitis in Pakistan.

©2019 PVJ. All rights reserved

**To Cite This Article:** Khan A, Durrani AZ, Yousaf A, Khan JA, Chaudhry M, Fatima Z and Khan A, 2019. Epidemiology and antimicrobial susceptibility of methicillin-resistant *staphylococcus aureus* in cattle of Pothohar Region, Pakistan. Pak Vet J, 39(3): 438-442. <http://dx.doi.org/10.29261/pakvetj/2019.049>

#### INTRODUCTION

Mastitis is an imperative disease of bovines worldwide causing large economic losses through intra-mammary infections in lactating animals (Romero *et al.*, 2018). Approximately 140 pathogen species, sub-species, and serovars have been identified in milk samples from lactating animals and classified into contagious, environmental and opportunistic mastitogens (Patterson, 2017). *Staphylococcus aureus* is contagious in nature and causes subclinical, chronic and acute intra-mammary inflammations in lactating animals. Therefore early detection of pathogens is vital for early therapeutic control of subclinical mastitis (Begum *et al.*, 2015).

Pakistan is an agricultural country; with a large population of cattle and buffalo, almost 46.1 million and 38.8 million, respectively. Livestock contributes 56% as subsector in agriculture and adding 11% into the national gross domestic product (Rehman *et al.*, 2017). The dairy industry in Pakistan faces several health hazards all the times; amongst which mastitis is the common problem and risk factor in the development of the dairy sector (Khan *et al.*, 2015). It causes loss of future calf, reduction in milk production, condemnation of milk, replacement of animals, culling and decrease quarter-wise production (Goncalves *et al.*, 2018). *S. aureus* is highly tolerant due to endorsement of a variety of genetic capabilities, amongst one prominent of them is methicillin-resistant *S.*

*aureus* (MRSA). MRSA has been recognized as a contagious zoonosis, by its transmission to humans from animals and vice-versa (Magro *et al.*, 2018). MRSA strain boosts the virulence of *S. aureus* intra-mammary infection and escape from host defense system (Kenar *et al.*, 2012). Hit and trial use of antibiotics develops resistance (Kistler *et al.*, 2018) to  $\beta$ -lactams by hydrolysis of  $\beta$ -lactam ring (Adediran *et al.*, 2018). Regular monitoring is required for such rising concerns on human as well as animal side. MRSA causing sub-clinical mastitis are originated into animal body exposed to bad management and contaminated environment (Aqib *et al.*, 2017).

Prevalence of sub-clinical mastitis, specific sensitivity of antibiotics against MRSA and identification of its risk factors is important to improve the udder health in lactating animals. The research data regarding *mec-A* gene MRSA strains is limited in Pakistan. Considering this the current study was designed to understand the epidemiology of MRSA along with *in-vitro* therapeutic sensitivity in the Pothohar region of Punjab, Pakistan.

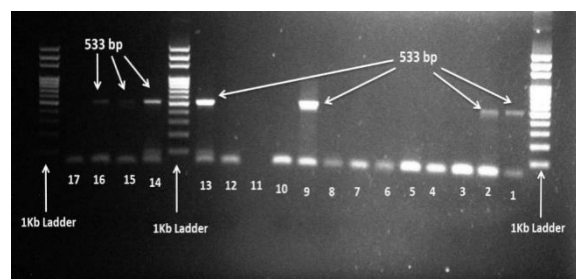
## MATERIALS AND METHODS

**Study design and general settings:** A cross-sectional survey was conducted in the north-eastern Pothohar region of Rawalpindi, Punjab, Pakistan.

**Field screening and data collection:** A total of 104 apparently healthy lactating cattle were selected randomly from the target area. The milk samples were collected after the primary screening with California Mastitis Test (CMT) (Patterson, 2017). CMT positive 2ml milk samples were collected in a sterile test tube and transported to the university research laboratory in ice pack for further diagnosis. The data regarding risk factors including (Location, Age, Breeds, Body condition Score, Milk yield, Lactation stage, number of lactations, Udder shape, teat shape, California Mastitis test, infected quarter, other disease, milk leakage, Quarantine of new animals, Quarantine of infected animals, Deworming program, Flies control programs, Type of farm, Type of shed, Animal movement in shed, Source of drinking water, feed type, Feed supplementation, Udder preparation, dipping Used, Time of dipping, Stimulation of Milker, Gender of milker, Milking Techniques, Number of milking by milker, Number of specie Reared, Ratio of Buffalo and Cattle, Animal moved of Premises recently, Number of people attend animals, Animal bedding change, Animal manure change, Sharing of Feed, Source of Animals for owner, Hoof Trimming, Occurrence of Mastitis, doctor availability) were collected on a pre-defined questionnaire. Data regarding geographical location was collected through Android phones by copying the coordinates.

**Microbiological and biochemical characterization:** In order to carry out the microbiological examination, CMT positive milk samples were centrifuged at 2000 rpm for ten minutes. While discarding supernatant the sedimentation of milk for direct demonstration was used. Initially, blood agar (containing 5% sheep blood) and Mannitol salt agar was used to identify *Staphylococcus aureus*. Further biochemical tests including coagulase, catalase and staining were applied for confirmation of the organisms.

**Detection of *mec-A* gene by PCR technique:** The MRSA strain was identifying using standard PCR-assay. DNA extraction Kit (Nucleo-Spin tissue, Macherey Nagel) was used to obtain cellular DNA of *Staphylococci* coloni from the overnight grown samples on Blood agar as per manufacturer's. Previous reported primers; Forward, 5'-AAAATCGATGGTAAAGGTTGGC-3' and Reverse, 5'-AGTTCTGGAGTACCGGATTTGC 3' Pairs were used for implication of 533 bp fragments. A volume of 2 $\mu$ l of extracted DNA, 19 $\mu$ l of sterilized water, 3 $\mu$ l of Master Mix (Solis Bio-dyne FIRPol). 0.5 $\mu$ l of forward primer, and 0.5  $\mu$ l reverse primer was added making total volume of 25 $\mu$ l. The temperature and time were optimized as for denaturation 95°C for 5 min, followed by 40 cycling as 94°C for 30 sec, 59.7°C for 30 sec, 72°C for 30 sec, and at last phase for extension 72°C for 10 minutes. Electrophoresis (Fig. 1) was used to visualize amplified product by adding 0.5 mg/ml ethidium bromide stain. The positive sample was then process for an *in-vitro* therapeutic sensitivity test.



**Fig. 1** PCR amplification of *mecA* gene (533 bp) of *Staphylococcus aureus* strains isolated from bovines and confirmed by PCR.

***In-vitro* antibiotic susceptibility test:** PCR confirmed (n=40) MRSA samples were carried out for antibiotic sensitivity following Kirby-Baur disc diffusion method, aseptically applied on Muller Hinton Agar by following reported procedure (Aqib *et al.*, 2017). The antibiotic sensitivity against MRSA was processed for different classes of drugs used in the field, included penicillin, Cephalosporin, Sulphonamide, Amino-glycoside, and Quinolones group. The zone of inhibition measured with Vernier calipers in millimeters and compared with latest standard zones reported around the world and given the finding as resistant (R), intermediate (I) and susceptible (S) (CLSI, 2017).

**Statistical analysis:** Data was entered in Epi-Data for cross-checking and validation. Data was cross-checked with the hard copies of questionnaires. Data analysis was performed through SPSS version 22.00. Data normality was assessed through Shapiro-Wilk test in SPSS. On this test, non-significant departure from normality was found. Passing the normality test descriptive and regression analysis of the data was performed.

Chi-square test was performed at 95% confidence interval to assess the prevalence of sub-clinical mastitis and association of factors with the prevalence. Univariable regression analysis was performed to identify the risk association of predicting variables with the outcome variable at a study power of 80%. Variables having  $P < 0.20$  at univariable analysis were passed onto final regression model. Multi-collinearity was assessed

and variables failing the test were excluded from the final model. Final regression model was conducted at 95% confidence interval.

## RESULTS

Out of 104 dairy cows of different breed were tested for sub-clinical mastitis performing CMT screening test and the information of positive samples. Overall prevalence of Sub-clinical mastitis was 71.1% (74/104) in Pothohar region of Punjab, Pakistan. Cross-bred was with the highest prevalence of SCM of 80.7% followed by 19.24% in Sahiwal, Jersey, and Holstein Friesian.

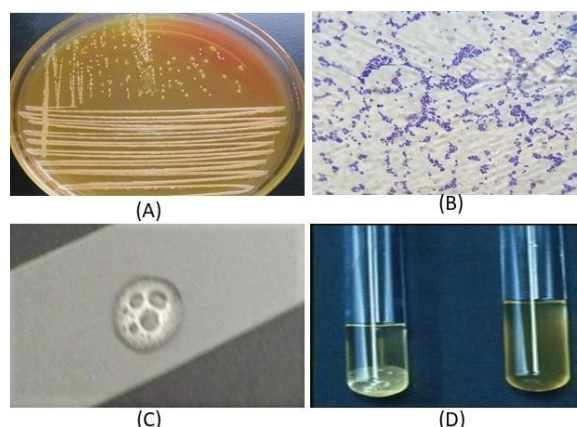
**Prevalence of Methicillin-Resistant *Staphylococcus aureus* (MRSA):** Among 74 CMT positive milk samples were examined for the presence of MRSA strain by targeting *mecA* gene on conventional PCR. The overall prevalence of MRSA recorded in this study was 54% (Table 2). Cattle produced more than five liters of milk per day found were significant ( $P < 0.05$ ) at higher risk of SCM (90%) as compared to low yield cattle. Fifty-four (72.9%) samples were produced typical yellow colonies within 24-48hr among 74 CMT positive milk samples that was further confirmed by biochemical test (Fig.2).

Assessing Potential risk factors for spread and transmission of MRSA several factors were found significantly associated. Several health, management and biosecurity factors were identified as risk factors including; daily milk yield, parity, udder, teat morphology, shed type, quarantine of new animal and De-worming. Cattle having cylindrical teat were at higher risk (OR=13.067;  $P$ -value<0.001) of getting SCM as compared to cattle having round teat shape. Closed shed type found to be at higher risk (OR=3.508; C.I.=1.432-8.594;  $P$ -value=0.00) of SCM as compared to open shed. Farms not performing quarantine of newly arrived animals were at higher risk (OR=3.444; C.I.= 1.323-8.968;  $P$ -value=0.01). Similarly, at farms where teat dipping is not performed were at greater risk (OR=13.091;  $P$ -value<0.001) potentially for sub-clinical mastitis. Detail results are depicted in Table 1 & 2.

**In-vitro antibiotic sensitivity test:** Forty confirmed PCR MRSA isolates were subjected to antimicrobial sensitivity tests against commonly in use antibiotics in field and veterinary Hospital. Accordingly, class-wise results showed that MRSA is highly resistant to Penicillin group (92.5%) and sensitive to Quinolones group (91.7%) in the study area, while at individual levels, Moxifloxacin (95%) was highly sensitive followed by Levofloxacin (90%), Cefrofloxacin (90%), Gentamycin (90%), Trimethoprim (87.5%), Sulphaphenazole (87.5%) antibiotic (Table 3).

## DISCUSSION

The overall prevalence of sub-clinical mastitis found was 71.1% in cattle similar to earlier reported by Mekonnen *et al.* (2017) in Ethiopia. The prevalence estimated here is much higher reported in other studies previously from Pakistan (Akhtar and Tanweer, 2016; Aqib *et al.*, 2019).



**Fig. 2:** Representative *S. aureus* phenotypic identifications (A) Growth on mannitol salt agar; (B) Gram's staining; (C) Catalase Positive and (D) Coagulase Positive.

**Table 1:** Sub-clinical mastitis prevalence in Pothohar Region in Cattle commercial farms

Variable name	Description	Positive/ Total	Prevalence	P-Value
Milk yield per day	<5	52/80	65.0	0.00
	>5	22/24	91.7	
Parity	First time	56/84	66.7	0.05
	2 or > 2	18/20	90.0	
Udder shape	Cylindrical	16/22	72.7	0.20
	Non-pendulous	16/24	66.7	
	Pendulous	16/18	88.9	
Teat shape	Round	26/40	65.0	0.00
	Bowl	2/4	50.0	
Shed type	Cylindrical	56/62	90.3	0.02
	Round	14/38	36.8	
Dipping status	Closed	38/46	82.6	0.00
	Open	36/58	62.1	
Quarantine of new animal	Yes	2/10	20.0	0.00
	No	72/94	76.6	
Source of animals	Yes	12/24	50.0	0.01
	No	62/80	77.5	
De-worming	By Birth	13/21	61.9	0.10
	Purchase	18/20	90.0	
	Mix	43/63	68.3	
De-worming	No De-worming	20/22	90.0	0.01
	Once a year	19/23	82.6	
	Twice a year	15/23	65.2	
	Thrice a year	20/36	55.6	

1. Only those variables are reported here which are having significant association with the occurrence of sub-clinical mastitis. 2. Variables having  $p$ -value<0.20 were retained in the final regression model.

**Table 2:** Multivariable logistic regression model for the risk factors associated with the occurrence of MRSA sub-clinical mastitis in commercial Cattle farms

Variables	Levels	Standard error	Odds ratio (C.I at 95%)	P-value
Milk Yield per day	<5		Ref	0.02
	>5	0.775	5.923 (1.297-27.046)	
Parity	First time		Ref	0.04
	2 or > 2	0.780	4.500 (0.975-20.775)	
Udder Shape	Round		Ref	0.02
	Pendulous	0.820	4.308 (0.864-15.489)	
Teat Shape	Round		Ref	0.00
	Cylindrical	0.597	13.067 (4.058-32.073)	
Shed Type	Open		Ref	0.00
	Closed	0.474	3.508 (1.432-8.594)	
Dipping Status	Yes		Ref	0.00
	No	0.827	13.091 (2.587-46.241)	
Quarantine of New Animal	Yes		Ref	0.01
	No	0.488	3.444 (1.323-8.968)	
Source of Animals	By Birth		Ref	0.03
	Purchase	0.793	4.186 (0.885-17.806)	
De-worming	Thrice a year		Ref	0.02
	No De-worming	0.861	5.333 (0.986-21.844)	

**Table 3:** *In-vitro* antibiotic sensitivity against MRSA Sub-clinical mastitis in cattle

Antibiotics Class	Antibiotic	Disk content	CLSI AZD (mm)	MRSA isolates	Individual drug (%)			Antibiotic class wise % response (n / N%)		
					R	I	S	R	I	S
Penicillin	Cloxacilin	5µg	20-26	40	100	-	-			
	Ticarcillin	75µg	18-22	40	100	-	-			
	Amoxicillin	25µg	20-28	40	100	-	-			
	Oxacillin	1µg	18-24	40	100	-	-			
	Ampicillin	10µg	27-35	40	100	-	-	92.5	-	7.5
	Amoxicillin & Calvalunic Acid	10/20µg	28-36	40	80	-	20			
	Piperacillin & Tazabactam	75/10µg	24-32	40	65	-	35			
Cephalosporin	Ticarcillin & calvalunic Acid	75/10µg	20-28	40	95	-	5			
	Cefixime	10µg	26-30	40	100	-	-			
	Cefotaxime	30µg	25-31	40	25	-	75	76.25	-	23.75
	Cefuroxime	30µg	27-35	40	87.5	-	12.5			
Sulphonamide	Ceftazidime	30µg	16-20	40	92.5	-	7.7			
	Sulphamethazole	300µg	24-34	40	22.5	-	77.5			
	Sulphaphenazole	300µg	24-34	40	12.5	-	87.5	13.4	2.5	84.1
Amino-glycoside	Trimethoprim	5µg	19-26	40	5	7.5	87.5			
	Gentamycine	10µg	19-27	40	10	-	90			
	Spectinomycine	100µg	19-27	40	25	-	75	13.5	6.7	80
Quinolones	Amikacine	30µg	20-28	40	5	20	75			
	Cefrofloxacin	5µg	20-30	40	10	-	90			
	levofloxacin	5µg	20-30	40	10	-	90	8.3	-	91.7
	Moxifloxine	5µg	28-34	40	5	-	95			

n=Positive samples; N=Total samples; R=Resistance; I=Intermediate; S=Sensitive; CLSI= Clinical laboratory standard Institute, AZD= Acceptable Zone Diameter (mm).

The finding shows that overall prevalence of MRSA was 54% in the Pothohar region of Pakistan. Similar high-level MRSA prevalence of 60%, was reported by Locatelli *et al.* (2017). In contrast to our study lower MRSA prevalence (34%) in Pakistan (2017) was reported: while from other regions of the world a prevalence of 16.7%, and 9.2%, is reported from India (2011), Saudi Arabia (2018), respectively (Kumar *et al.*, 2011; Aqib *et al.*, 2017; El-Deeb *et al.*, 2018). This higher MRSA prevalence in our study area could be due to the difference in management practices and geographical variations. The farm structures and management practices adopted here are below standards which supports the transmission of infectious pathogens. It could also be attributed to several other factors such as climatic factors affecting the susceptibility of animals to pathogens (Khan *et al.*, 2015). MRSA's contagious nature makes it more lethal when number of animals kept together increases, grazing system (by grazing different farm animals together), lack of awareness (unsatisfactory awareness level in the study area), unhygienic and bio-security measures (especially quarantine of newly arrived animals and diseased animals) (Aqib *et al.*, 2019). The low prevalence reported in previous studies could be due to diagnostic tools creating inconsistency for determination of MRSA prevalence, due to poor appearance of *mecA* gene or excessive-production of  $\beta$ -lactamase (Haran *et al.*, 2012), *mecA* documented a most accurate method for MRSA detection. However, some other factor developed a change in phenotypic expression like PH and osmolality of culture media that may lead to inconsistent result (Kumar *et al.*, 2011).

High producing cow have a much larger volume of udder and antibiotic unable to remove the infection from infected tissue (Abera *et al.*, 2010). Cattle with high parity were also at higher risk (OR=4.500; C.I=0.975-20.775) of getting SCM (Saifudeen *et al.*, 2018). Young cows have an energetic immune system with teat functioning properly (Seyoum *et al.*, 2018). Udder and teat morphology showed positive association with SCM (Bharti *et al.*, 2015). Our study also found that distance

between floor and teat also play an important role in the development of the infection (Kaur *et al.*, 2018).

Amongst managemental factors including shed type, dipping status and de-worming were found significantly associated with sub-clinical mastitis (Sanotharan *et al.*, 2016). In closed sheds the frequency of infection spread is into healthy animals because it provides better environment to microorganisms for growth. Milker hands also act as a source of spread for pathogens, so unhygienic milking practices leads to infection (Seyoum *et al.*, 2018). In developed countries closed herd system exists and several preventive measures are adopted for new entries and replacement (Ramírez *et al.*, 2014). But unfortunately dairy farming in Pakistan does not follow SOPs of management and biosecurity, therefore purchasing new animals and lack of proper deworming strategies increases the risk of SCM at farm level (Zadoks *et al.*, 2011).

The MRSA isolates from the field were highly sensitive to Moxifloxacin (95%), Gentamycin (90%) and Trimethoprim (87.7%) in line with the reported findings in the previous studies (Aqib *et al.*, 2017). Penicillin groups including; Cloxacilin (100%), Ticarcillin (100%), Amoxicillin (100%), Oxacillin (100%), Ampicillin(100%) and Cefixime (100%) in Cephalosporin group was resistant to these isolates (Kulshrestha *et al.* 2017). Such higher resistance might have developed due to the prolonged and haphazard use of antimicrobials (Kistler *et al.*, 2018). Which is a result of plasmid transfer and transposons between Staphylococcal species highly prevalent in our environment (Aqib *et al.*, 2017) and excessive production of beta-lactamase enzyme disturbing the function of antibiotic by breaking the beta-lactam ring (Adediran *et al.*, 2018). The non-professional veterinary practice in the field is a serious threat to antibiotic resistance dramatic increase currently and in future if not controlled.

**Conclusions:** We report the presence of MRSA strain in dairy farms of cattle in and around Islamabad, Pakistan. The prevalent MRSA strains were detected in this study and these were resistant to Penicillin group of antibiotics in the field.

**Authors contribution:** AK: Conducted this study as a principle investigator. AZD: Supervised the study and contributed in study design and write up. AY: Contributed in the study design and laboratory diagnostics. JAK: Contributed in the sample collection and field data collection. MC: Contributed in the study design, sampling and data collection. ZF: Contributed in the write up of the manuscript. AK: Contributed in the data analysis and write up.

## REFERENCES

- Abera M, Demie B, Aragaw K, *et al.*, 2010. Isolation and identification of *Staphylococcus aureus* from bovine mastitic milk and their drug resistance patterns in Adama town, Ethiopia. *J Vet Med Anim Health* 2:29-34.
- Adediran S, Sarkar KS, Pratt R, 2018. kinetic evidence for a second ligand binding site on *Streptococcus pneumoniae* penicillin-binding protein 2x. *Biochemistry* 57:1758-66.
- Akhtar A and Tanweer U, 2016. Prevalence of mastitis and identification of causative pathogens in local and crossbred cows in Dera Ismail Khan. *Pak J Sci* 64: 265-268.
- Aqib Al, Ijaz M, Anjum AA, *et al.*, 2017. Antibiotic susceptibilities and prevalence of Methicillin resistant *Staphylococcus aureus* (MRSA) isolated from bovine milk in Pakistan. *Acta Trop* 176:168-72.
- Aqib Al, Nighat S, Ahmed R, *et al.*, 2019. Drug susceptibility profile of *Staphylococcus aureus* isolated from mastitic milk of goats and risk factors associated with goat mastitis in Pakistan. *Pak J Zool* 51:307-15.
- Begum M, Hossain M, Ershaduzzaman M, *et al.*, 2015. Study on prevalence and risk factors of subclinical mastitis in lactating dairy cows in Rajshahi and Rangpur division of Bangladesh. *Wayamba J Anim Sci* 7:1129-37.
- Bharti P, Bhakat C, Pankaj PK, *et al.*, 2015. Relationship of udder and teat conformation with intra-mammary infection in crossbred cows under hot-humid climate. *Vet World* 8:898.
- Clinical and Laboratory Standards Institute (CLSI), 2017: Performance standards for antimicrobial susceptibility testing 27<sup>th</sup> edition: Informational Supplement, CLSI. Document, M100-S26. Performance standards for antimicrobial disk susceptibility test, approved standard 10<sup>th</sup> edition. CLSI Document M02-A12. Clinical and Laboratory Standards Institute, Wayne PA.
- El-Deeb W, Fayez M, Elmoslemay A, *et al.*, 2018. Methicillin resistant *Staphylococcus aureus* among goat farms in Eastern province, Saudi Arabia: Prevalence and risk factors. *Prev Vet Med* 156:84-90.
- Goncalves J, Kamphuis C, Martins C, *et al.*, 2018. Bovine subclinical mastitis reduces milk yield and economic return. *Livest Sci* 210:25-32.
- Haran K, Godden S, Boxrud D, *et al.*, 2012. Prevalence and characterization of *Staphylococcus aureus*, including methicillin-resistant *Staphylococcus aureus*, isolated from bulk tank milk from Minnesota dairy farms. *J Clin Microbiol Infect* 50:688-95.
- Kaur G, Bansal BK, Singh RS, *et al.*, 2018. Associations of teat morphometric parameters and subclinical mastitis in riverine buffaloes. *J Dairy Res* 85:303-8.
- Kenar B, Kuyucuoglu Y and Şeker E, 2012. Antibiotic susceptibility of coagulase-negative staphylococci isolated from bovine subclinical mastitis in Turkey. *Pak Vet J* 32:390-3.
- Khan A, Mushtaq MH, Ahmad D, *et al.*, 2015. Prevalence of clinical mastitis in bovines in different climatic conditions In KPK, Pakistan. *Sci Int* 27: 2289-2293
- Kistler JM, Thoder JJ and Ilyas AM, 2019. MRSA incidence and antibiotic trends in urban hand infections: A 10-Year longitudinal study. *Hand (N Y)* 14:449-54.
- Kulshrestha A, Anamika V, Mrithunjay K, *et al.*, 2017. A prospective study on the prevalence and antibiotic sensitivity pattern of methicillin resistant *Staphylococcus aureus* isolated from various clinical specimen at a tertiary care post graduate teaching institute. *Int J Curr Microbiol App Sci* 6:1859-69.
- Kumar R, Yadav B and Singh R, 2011. Antibiotic resistance and pathogenicity factors in *Staphylococcus aureus* isolated from mastitic Sahiwal cattle. *J Biosci* 36:175-88.
- Locatelli C, Cremonesi P, Caprioli A, *et al.*, 2017. Occurrence of methicillin-resistant *Staphylococcus aureus* in dairy cattle herds, related swine farms, and humans in contact with herds. *J Dairy Sci* 100:608-19.
- Magro G, Rebolini M, Beretta D, *et al.*, 2018. Methicillin-resistant *Staphylococcus aureus* CC22-MRSA-IV as an agent of dairy cow intramammary infections. *Vet Microbiol* 227:29-33.
- Mekonnen SA, Koop G, Melkie ST, *et al.*, 2017. Prevalence of subclinical mastitis and associated risk factors at cow and herd level in dairy farms in North-West Ethiopia. *Prev Vet Med* 145:23-31.
- Patterson C, *Veterinary Medicine: A Textbook of the Diseases of Cattle, Horses, Sheep, Pigs, and Goats. Volumes 1 and 2. In; 2017.*
- Ramírez N, Keefe G, Dohoo I, *et al.*, 2014. Herd-and cow-level risk factors associated with subclinical mastitis in dairy farms from the High Plains of the northern Antioquia, Colombia. *J Dairy Sci* 97:4141-50.
- Rehman A, Jingdong L, Chandio AA, *et al.*, 2017. Livestock production and population census in Pakistan: Determining their relationship with agricultural GDP using econometric analysis. *Inform Proces Agri* 4:168-77.
- Romero J, Benavides E and Meza C, 2018. Assessing financial impacts of subclinical mastitis on colombian dairy farms. *Front Vet Sci* 5: 273.
- Saifudeen SM, Venkataramanan R and Pandian ASS, 2018. Relationship of risk factors with incidence of mastitis in cows. 6: 2397-2402.
- Sanotharan N, Pagthinathan M and Nafees M, 2016. Prevalence of bovine subclinical mastitis and its association with bacteria and risk factors in milking cows of Batticaloa District in Sri Lanka. *Int J Innov Res Sci Technol* 3:2313-3759.
- Seyoum B, Kefyalew H, Abera B, *et al.*, 2018. Prevalence, risk factors and antimicrobial susceptibility test of *Staphylococcus aureus* in Bovine cross breed mastitic milk in and around Asella town, Oromia regional state, southern Ethiopia. *Acta Trop* 177:32-6.
- Zadoks RN, Middleton JR, McDougall S, *et al.*, 2011. Molecular epidemiology of mastitis pathogens of dairy cattle and comparative relevance to humans. *J Mammary Gland Biol Neoplasia*. 16:357-72.